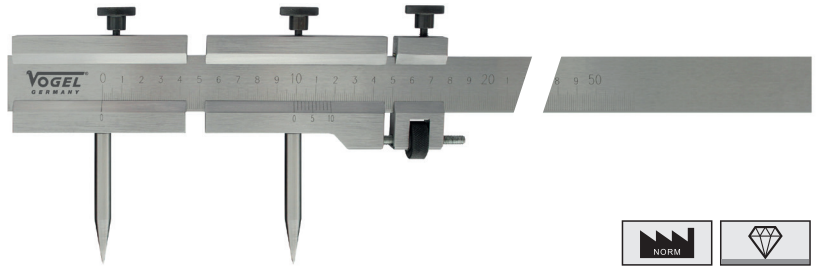
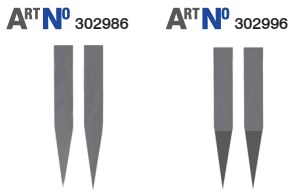


# Precision Trammels

## Trammel

- steel, with hardened, exchangeable points
- flat beam, with fine adjustment
- with fixing screws



ART No	mm	mm	ART No spare points, in pair, hardened	ART No spare points, in pair, carbide
302911	500	0.1	302986	302996
302912	1000	0.1	302986	302996
302913	1500	0.1	302986	302996
302914	2000	0.1	302986	302996
302915	3000	0.1	302986	302996

## Precision In- and Outside Caliper

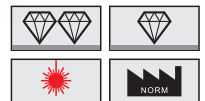
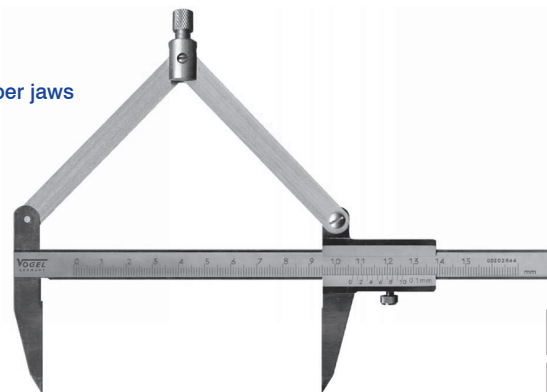
- made of Dur-Aluminium, surface hardened HRC63
- scratch-resistant, black anodized surface
- laser engraved, clear reading scale



ART No	mm	mm	total length mm
303306	120	0.1	190
303307	160	0.1	250
303308	200	0.1	310
303309	250	0.1	380
303310	300	0.1	460

## Compass Vernier Caliper

- for accurate marking owing to parallel position of the scriber jaws
- special steel, reading scale in matt chrome finish
- with fixing screw
- with carbide tips or hardened tips at your choice



ART No hardened tips	ART No carbide tips	mm	for $\phi$ mm	mm
303002	303102	150	300	0.1
303003	303103	200	400	0.1
303004	303104	250	500	0.1
303005	303105	300	600	0.1